



45'
Single Family Homes



Mahogany, Manotick

Where unique home designs and beautiful streetscapes are woven around tranquil creeks, ponds, and parkland.

Grass brushes your ankles,
a light breeze gently lifts your
hair, the familiar earthy scent
of nature surrounds you,
and you're home.



traditions

Family friendly streets are lined with architecturally inspired homes and stone finishes — an ode to Manotick's enduring mill history.



live better

At Minto's Mahogany, we are committed to your health, happiness and wellbeing. From sustainable and innovative design that considers the quality of your sleep, the air you breathe, and the water you drink to open spaces that encourage personal connections with family. We have explored the impact of a community designed around nature for an active healthy lifestyle. Everything you need to live your best life is in Mahogany.

Find a neighbour in nature

Mahogany is a Minto community like no other. Beautiful neighbourhoods are built around lovingly preserved green spaces, natural creeks, and ponds. Wind through a 50 acre woodlot along tree-lined trails perfect for a morning jog or an evening stroll with the dog.

Plus, with the addition of an English Public Elementary School in the centre of the community, you have peace of mind knowing your children can take the 5-minute walk to school along quiet streets.

It's in the details

We use the latest high-performance windows to regulate your home's temperature. And they're bigger too, so every room is filled with bright, natural sunlight.

It's yours to design

Choose from the latest trends in interior features and finishes with help from our expert Design Centre. Your picture perfect home exists — it's here in Manotick.



The Heartwood



The Heartwood



The charm of Manotick, the design of Mahogany

Inspired by the timeless charm of the village of Manotick, each home has a stylish and contemporary exterior perfectly suited to the picturesque village character. Contemporary interiors shine with open-concept floorplans that create a flow throughout the house and large windows that fill every room with bright natural light.

- Open-concept floorplans move you freely from room to room
- Home designs unique to Mahogany
- Built on large lots
- Contemporary style and elegance



Escape the city

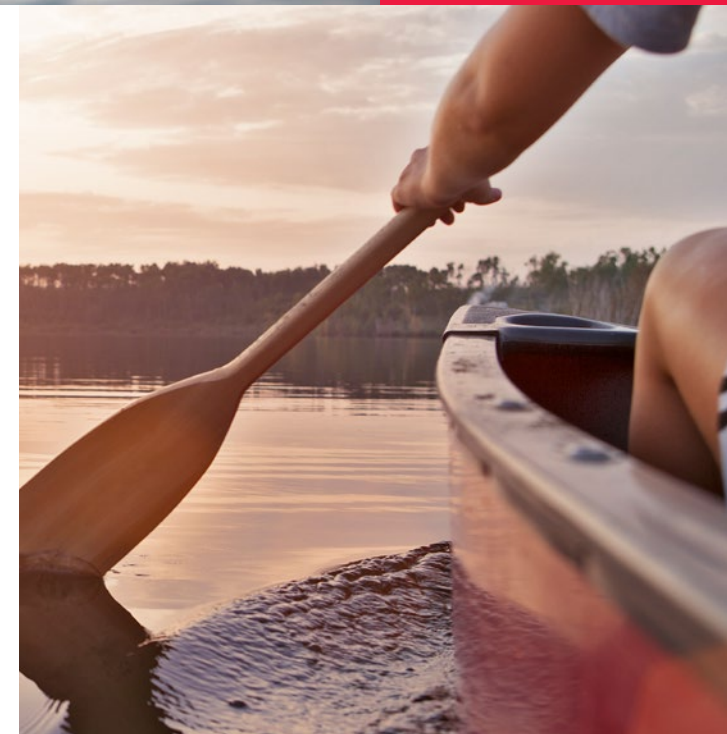
Let the quaint and vibrant charm of Manotick embrace you. Everything you need is a stroll away down Manotick Walk. Along the shores of the Rideau River, boats line the docks of Mahogany Harbour and families enjoy sunny days by the water before exploring bustling Manotick Main Street.



cuisine

culture

Shop local and eat at independently owned restaurants and cafes. Butchers, bakers, florists, boutiques, markets and grocers, salons and spas all add to Manotick's unique village lifestyle.





45' Collection

Home designs that are unique with bold exteriors reflective of the historic Manotick charm and contemporary, open concept floorplans with large windows to fill each room with natural light.



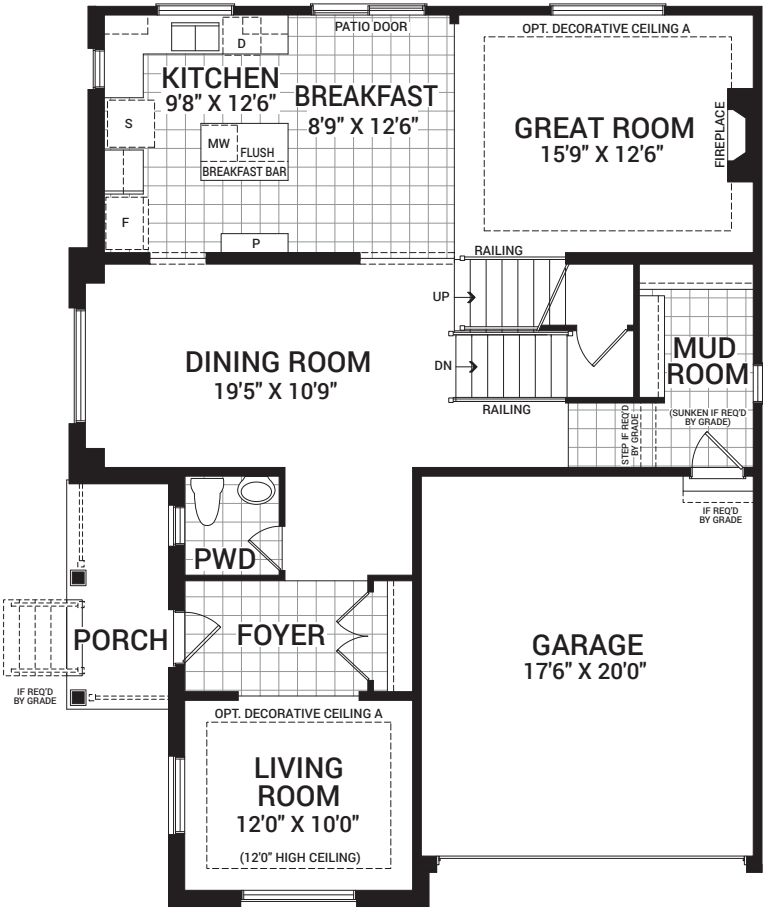
45' Birch

2,477 sq. ft.

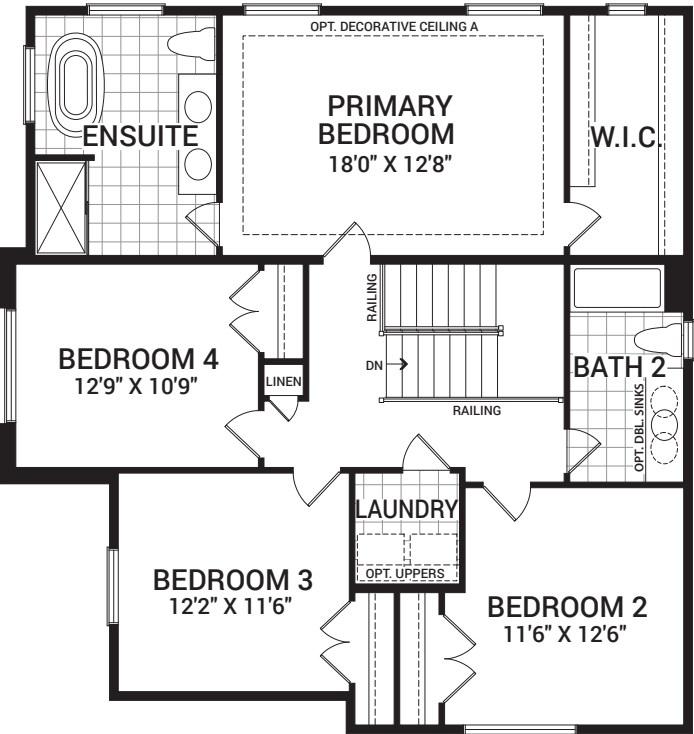


Floorplan – Elevation A

MAIN FLOOR

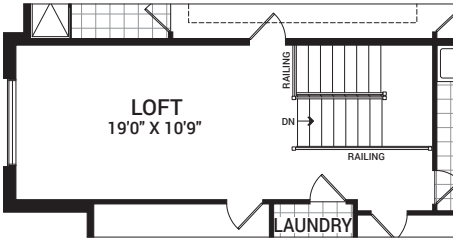


SECOND FLOOR

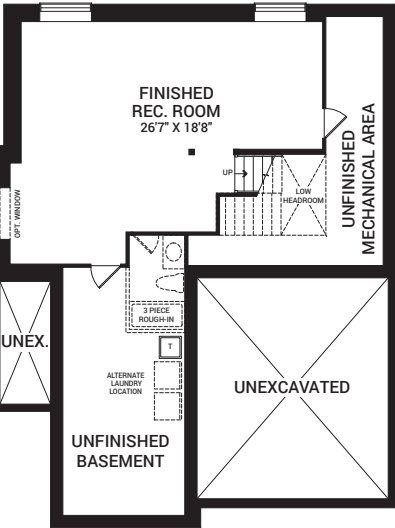


Flex Plans

OPTIONAL SECOND FLOOR LOFT IN LIEU OF BEDROOM 4



OPTIONAL FINISHED BASEMENT REC. ROOM



Flex plans are alternate layouts unique to each model, offered as part of our predetermined menu of additional investments. To learn what other options are available for your model or more information, ask your Sales Representative. All plans, dimensions, and specifications are subject to change without notice. Actual usable floor space may vary from the stated floor area. Column locations, window locations, and sizes may vary and are subject to change without notice. Renderings are artist's concept only. E.&O.E. August, 2022

45' Heartwood II

2,507 sq. ft.



2,536 sq. ft.



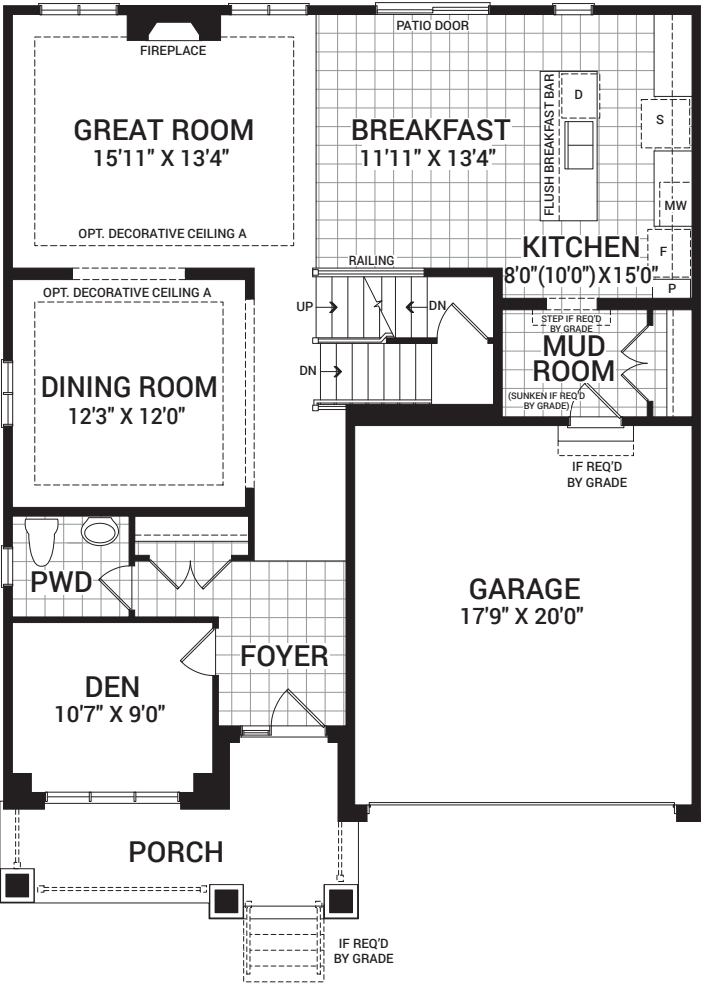
2,507 sq. ft.



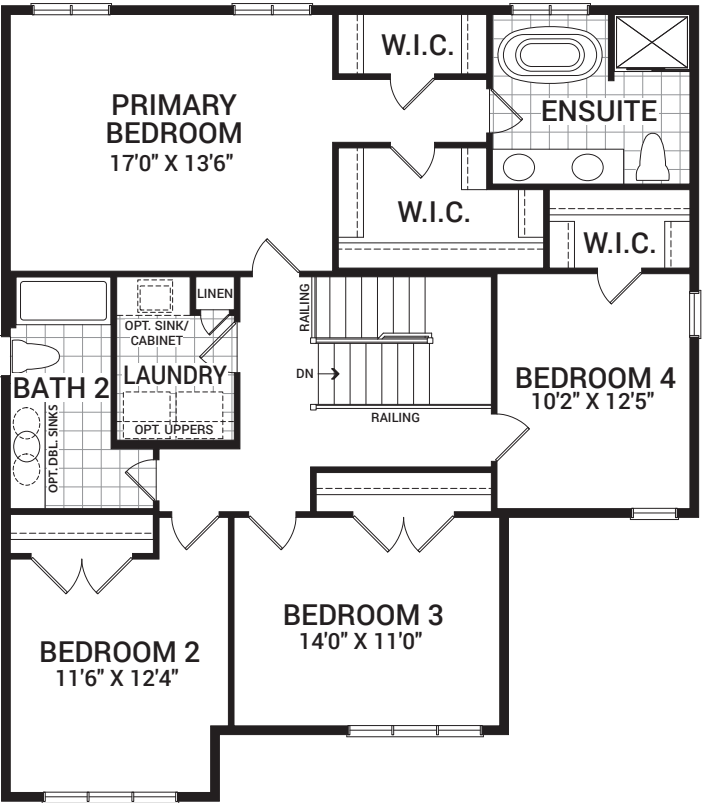
2,534 sq. ft.

Floorplan – Elevation A

MAIN FLOOR

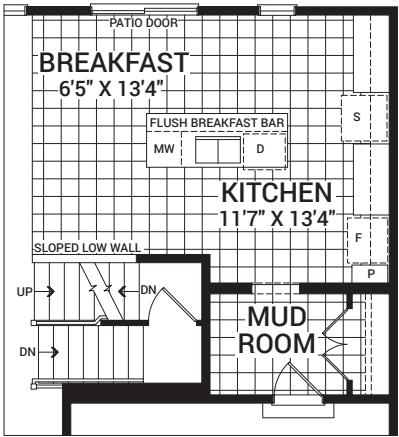


SECOND FLOOR

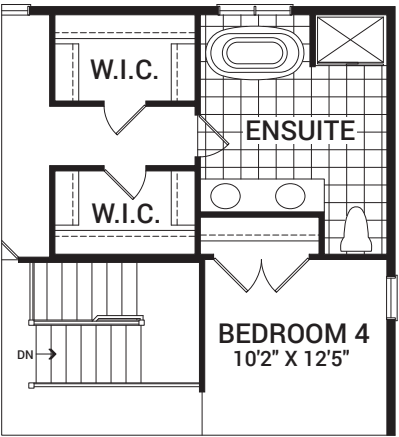


Flex Plans

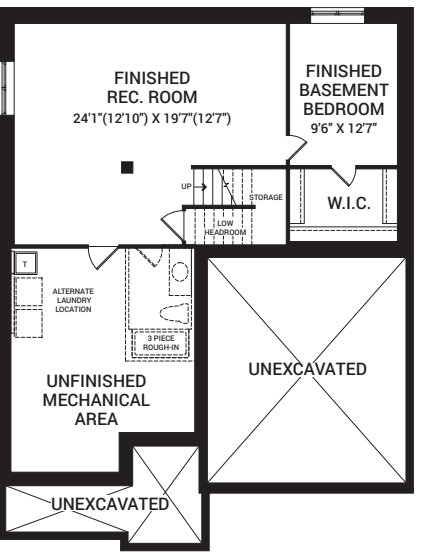
OPTIONAL KITCHEN LAYOUT A



OPTIONAL ENSUITE LAYOUT A



OPTIONAL FINISHED BASEMENT REC. ROOM W/BEDROOM



Flex plans are alternate layouts unique to each model, offered as part of our predetermined menu of additional investments. To learn what other options are available for your model or more information, ask your Sales Representative. All plans, dimensions, and specifications are subject to change without notice. Actual usable floor space may vary from the stated floor area. Column locations, window locations, and sizes may vary and are subject to change without notice. Renderings are artist's concept only. E.&O.E. August, 2022

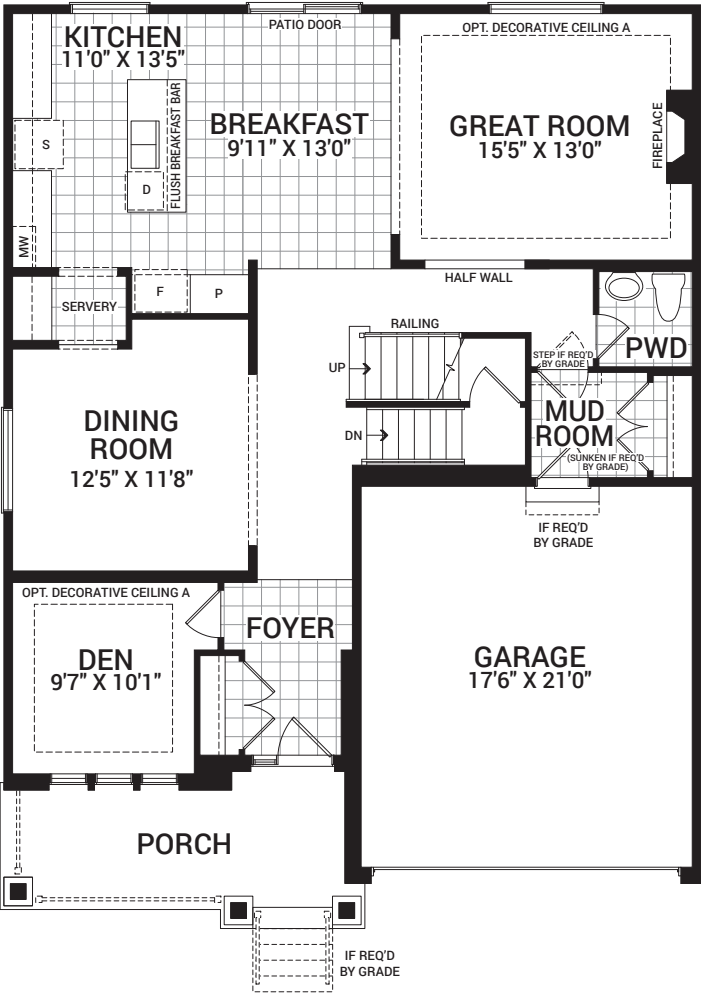
45' Fraser

2,705 sq. ft.

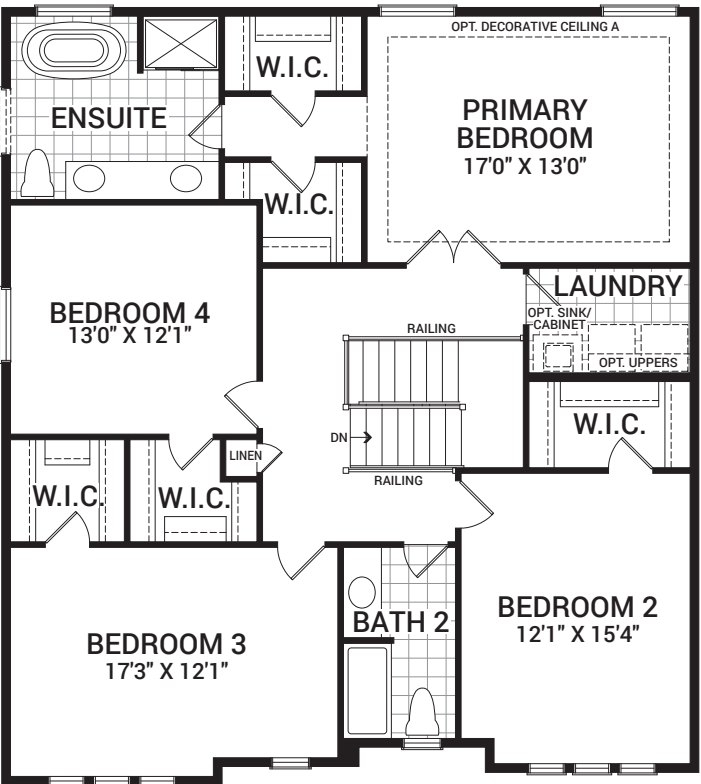


Floorplan – Elevation A

MAIN FLOOR

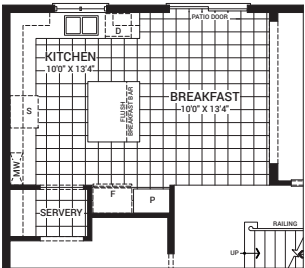


SECOND FLOOR

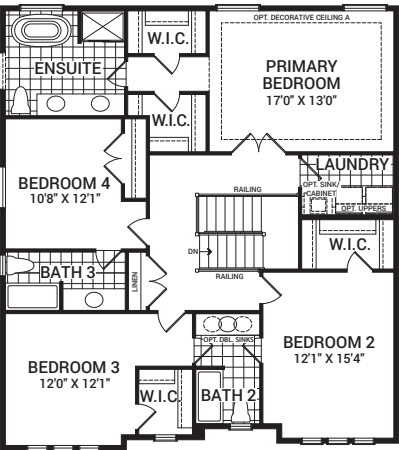


Flex Plans

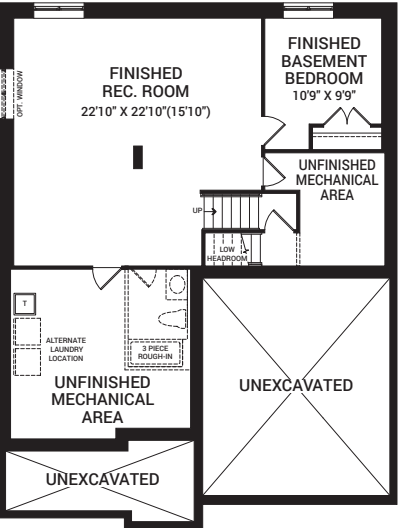
OPTIONAL KITCHEN LAYOUT A



OPTIONAL SECOND FLOOR LAYOUT A



OPTIONAL FINISHED BASEMENT REC. ROOM W/BEDROOM



Flex plans are alternate layouts unique to each model, offered as part of our predetermined menu of additional investments. To learn what other options are available for your model or more information, ask your Sales Representative. All plans, dimensions, and specifications are subject to change without notice. Actual usable floor space may vary from the stated floor area. Column locations, window locations, and sizes may vary and are subject to change without notice. Renderings are artist's concept only. E.&O.E. August, 2022

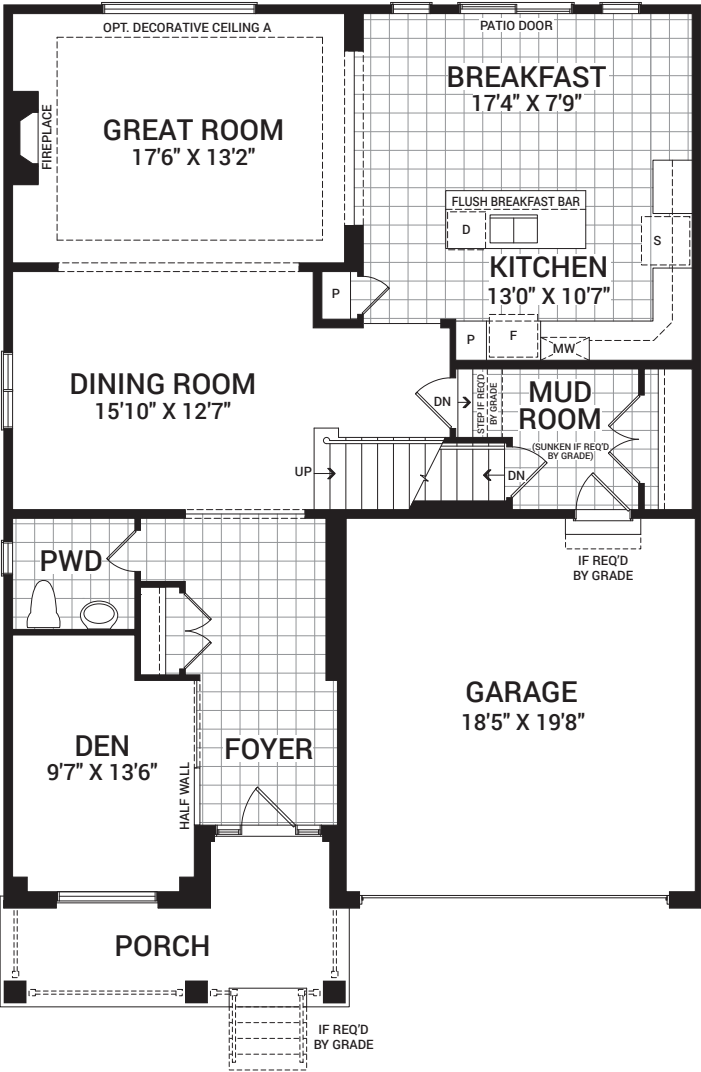
45' Magnolia 4 Bedroom

2,987 sq. ft.

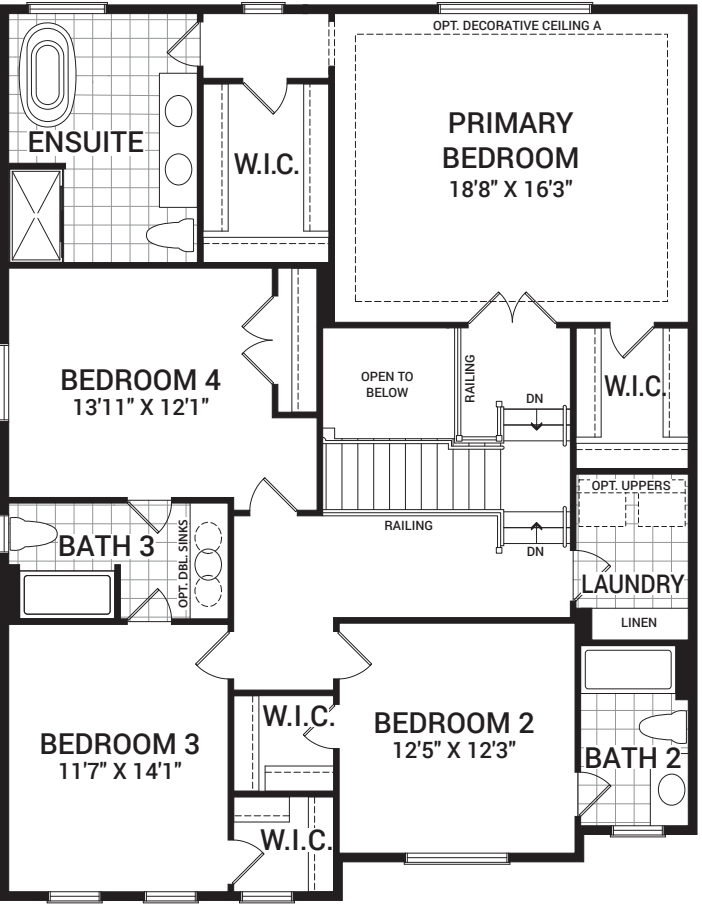


Floorplan – Elevation A

MAIN FLOOR

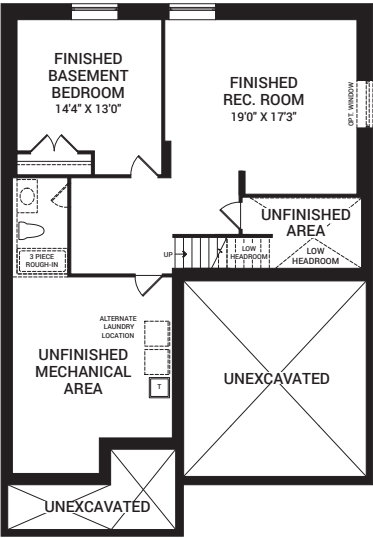


SECOND FLOOR



Flex Plans

OPTIONAL FINISHED BASEMENT REC. ROOM W/BEDROOM



Flex plans are alternate layouts unique to each model, offered as part of our predetermined menu of additional investments. To learn what other options are available for your model or more information, ask your Sales Representative. All plans, dimensions, and specifications are subject to change without notice. Actual usable floor space may vary from the stated floor area. Column locations, window locations, and sizes may vary and are subject to change without notice. Renderings are artist's concept only. E.&O.E. August, 2022

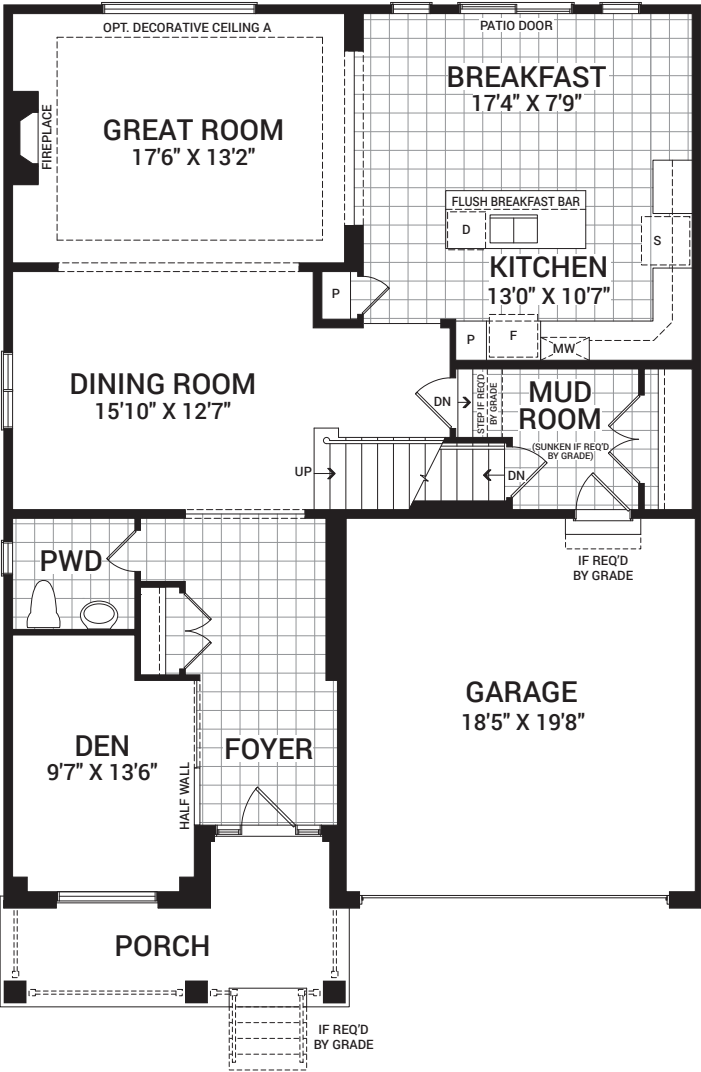
45' Magnolia 5 Bedroom

2,987 sq. ft.

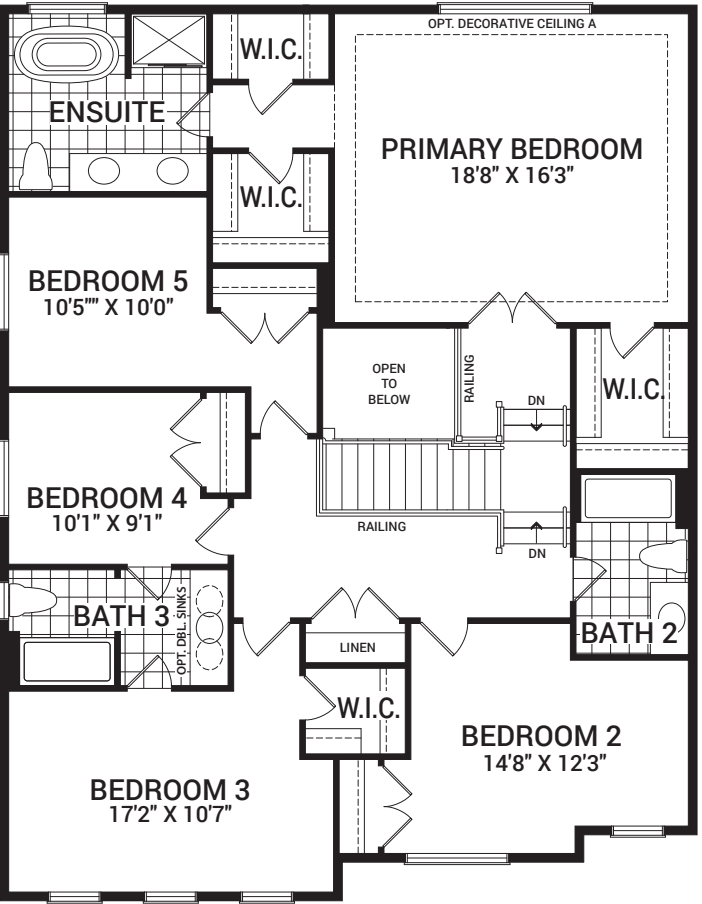


Floorplan – Elevation A

MAIN FLOOR

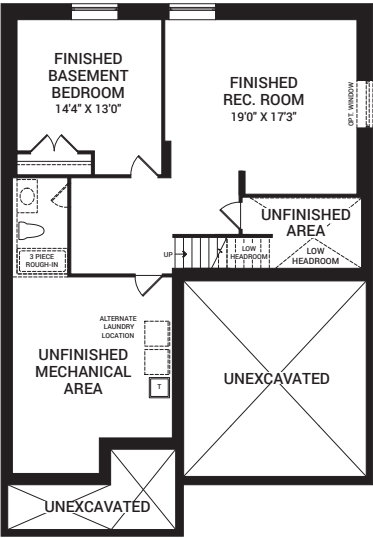


SECOND FLOOR



Flex Plans

OPTIONAL FINISHED BASEMENT REC. ROOM W/BEDROOM



Flex plans are alternate layouts unique to each model, offered as part of our predetermined menu of additional investments. To learn what other options are available for your model or more information, ask your Sales Representative. All plans, dimensions, and specifications are subject to change without notice. Actual usable floor space may vary from the stated floor area. Column locations, window locations, and sizes may vary and are subject to change without notice. Renderings are artist's concept only. E.&O.E. August, 2022

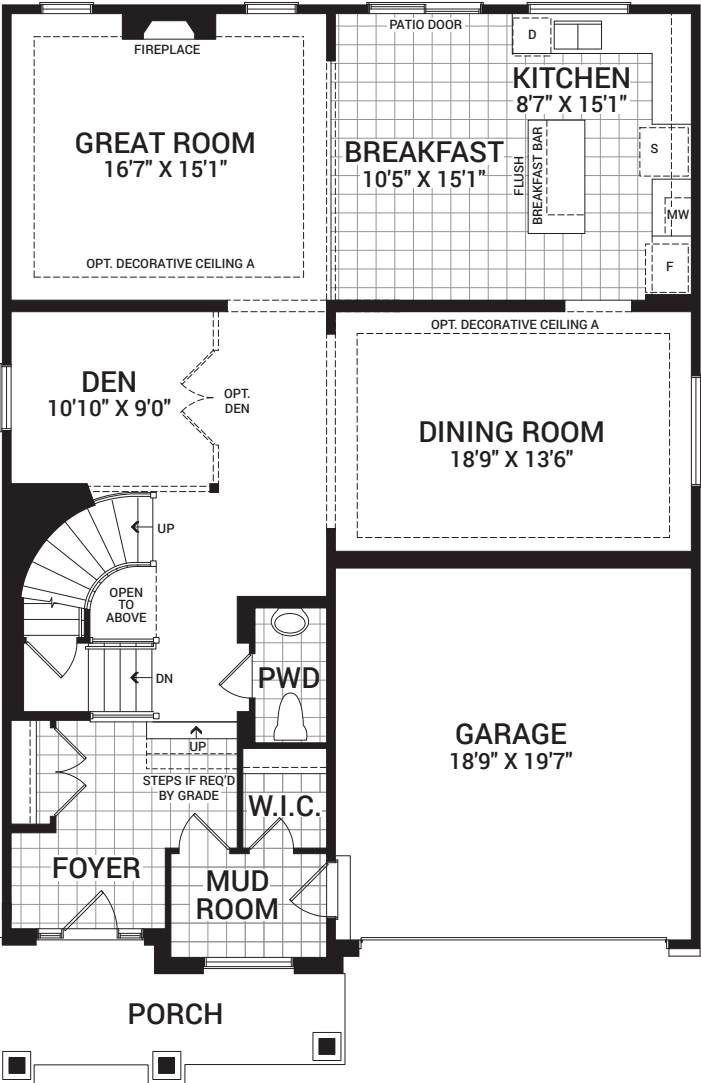
45' Mulberry

3,270 sq. ft.

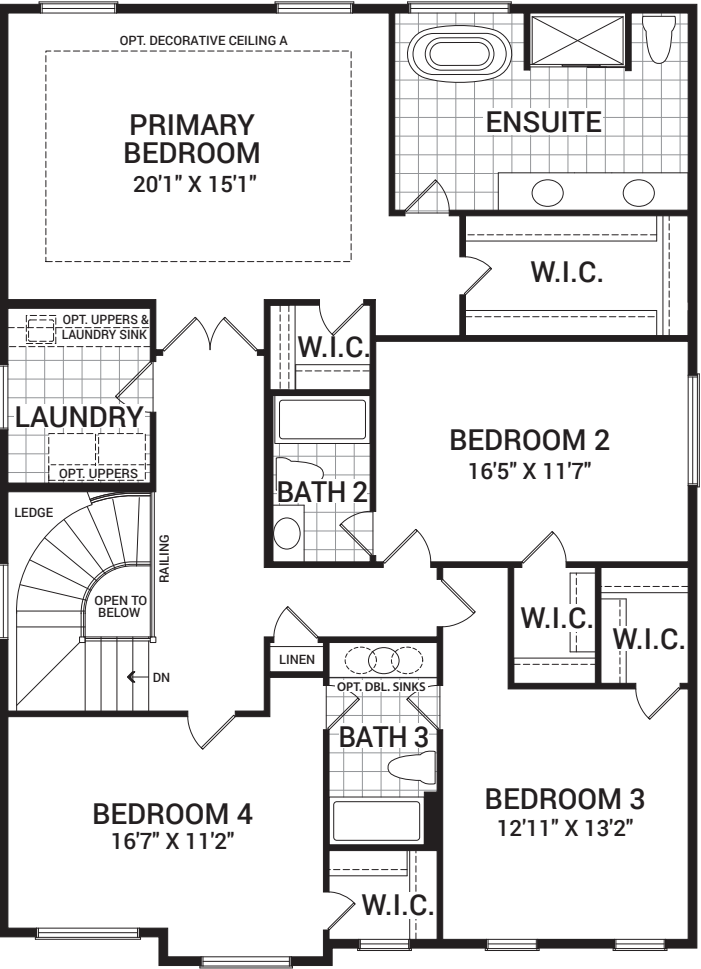


Floorplan – Elevation A

MAIN FLOOR

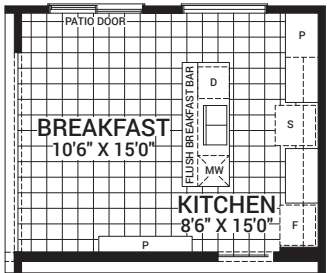


SECOND FLOOR

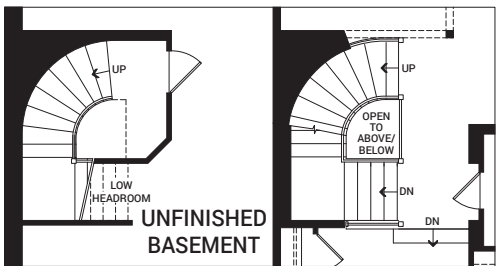


Flex Plans

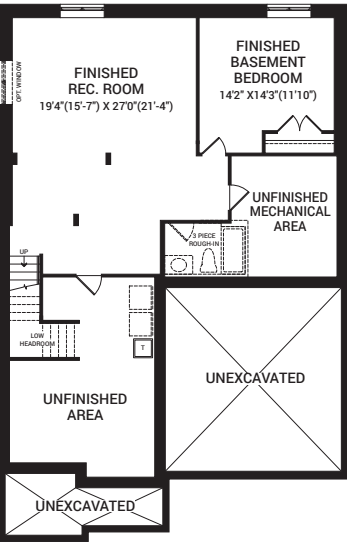
OPTIONAL KITCHEN LAYOUT A



OPTIONAL FINISHED OPEN CIRCULAR STAIR TO BASEMENT W/LOBBY



OPTIONAL FINISHED BASEMENT REC. ROOM W/BEDROOM



Flex plans are alternate layouts unique to each model, offered as part of our predetermined menu of additional investments. To learn what other options are available for your model or more information, ask your Sales Representative. All plans, dimensions, and specifications are subject to change without notice. Actual usable floor space may vary from the stated floor area. Column locations, window locations, and sizes may vary and are subject to change without notice. Renderings are artist's concept only. E.&O.E. August, 2022

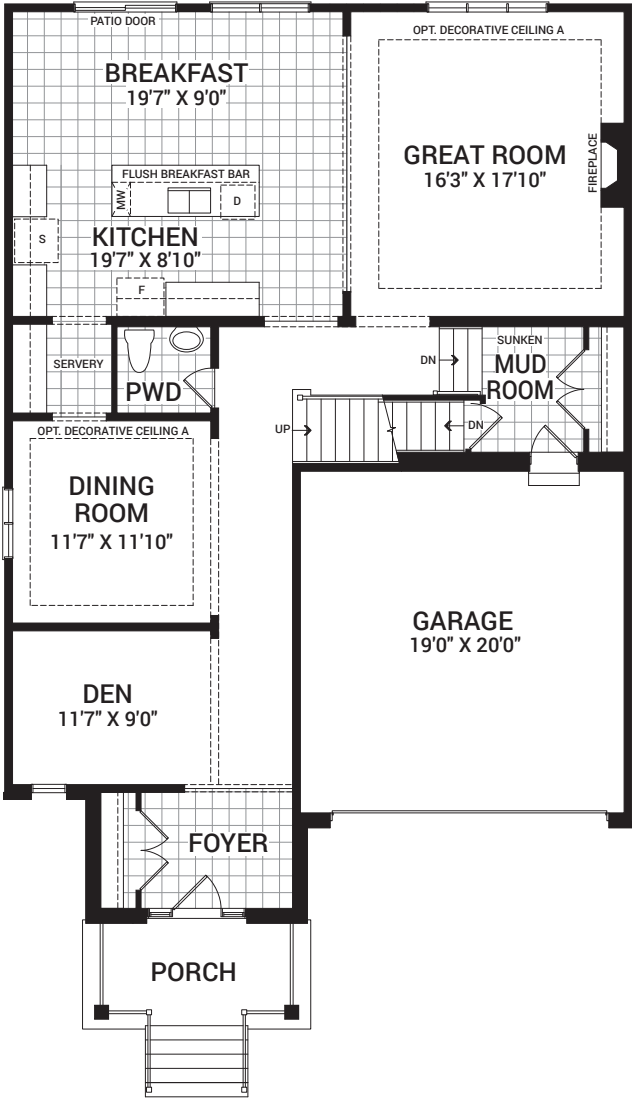
45' Noble

3,262 sq. ft.

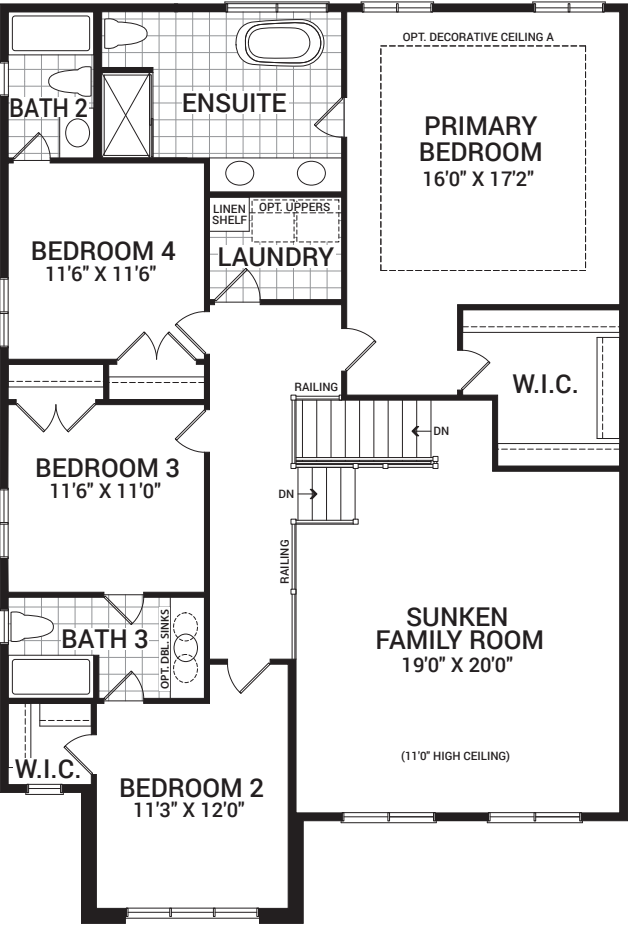


Floorplan – Elevation A

MAIN FLOOR

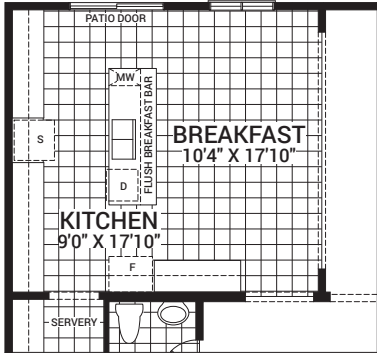


SECOND FLOOR

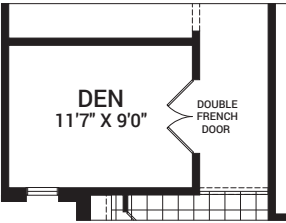


Flex Plans

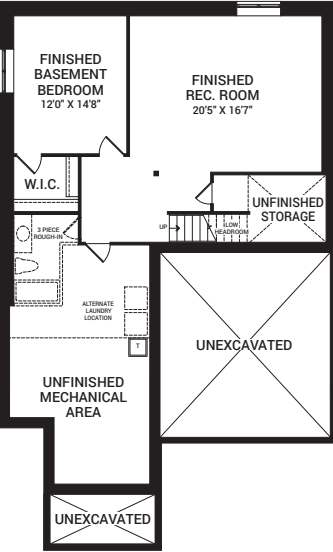
OPTIONAL KITCHEN LAYOUT A



DEN WITH OPTIONAL FRENCH DOORS



OPTIONAL FINISHED BASEMENT REC. ROOM W/BEDROOM



Flex plans are alternate layouts unique to each model, offered as part of our predetermined menu of additional investments. To learn what other options are available for your model or more information, ask your Sales Representative. All plans, dimensions, and specifications are subject to change without notice. Actual usable floor space may vary from the stated floor area. Column locations, window locations, and sizes may vary and are subject to change without notice. Renderings are artist's concept only. E.&O.E. August, 2022

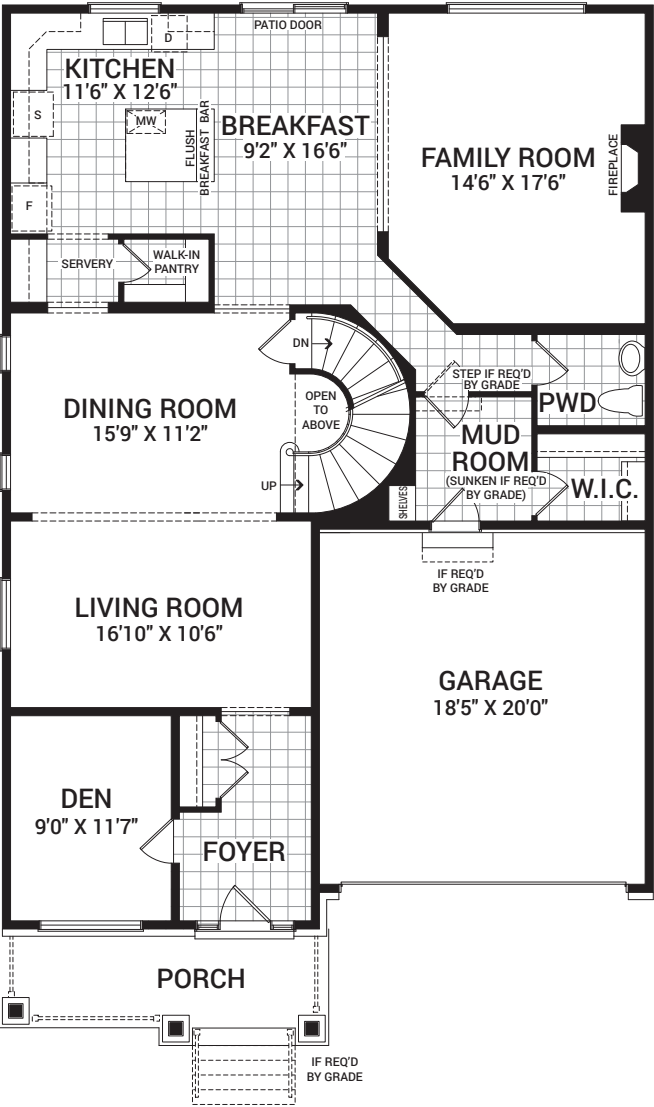
45' Oak 4 Bedroom

3,291 sq. ft.

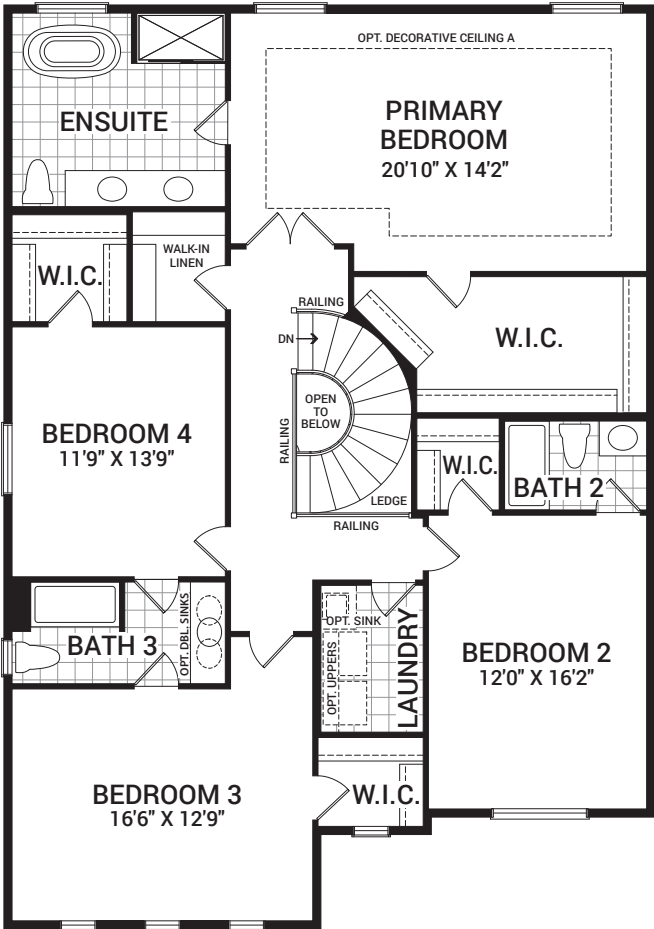


Floorplan – Elevation A

MAIN FLOOR

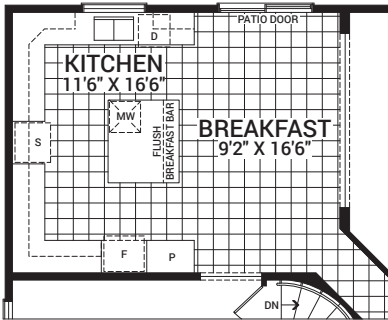


SECOND FLOOR

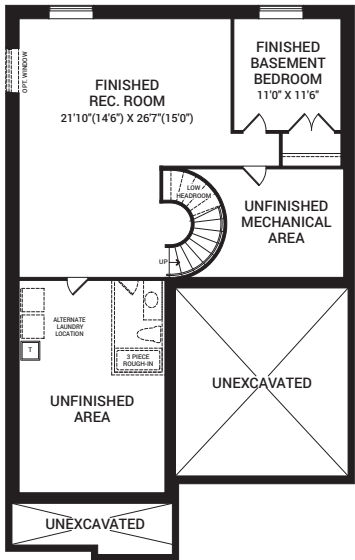


Flex Plans

OPTIONAL KITCHEN LAYOUT B



OPTIONAL FINISHED BASEMENT REC. ROOM W/BEDROOM



Flex plans are alternate layouts unique to each model, offered as part of our predetermined menu of additional investments. To learn what other options are available for your model or more information, ask your Sales Representative. All plans, dimensions, and specifications are subject to change without notice. Actual usable floor space may vary from the stated floor area. Column locations, window locations, and sizes may vary and are subject to change without notice. Renderings are artist's concept only. E.&O.E. August, 2022

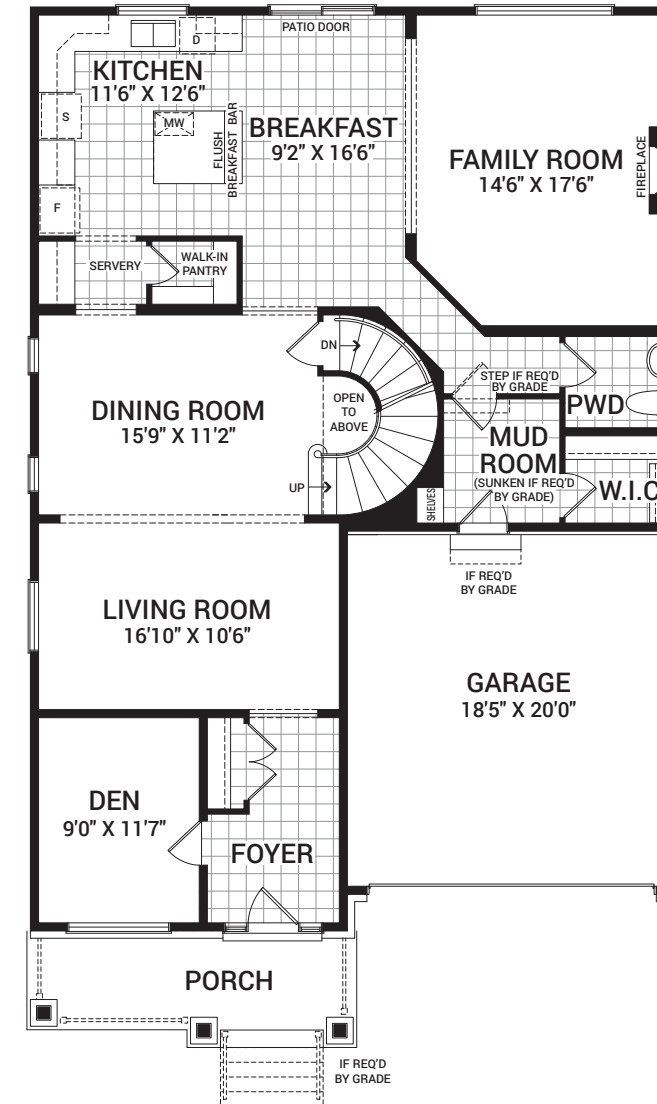
45' Oak 5 Bedroom

3,291 sq. ft.

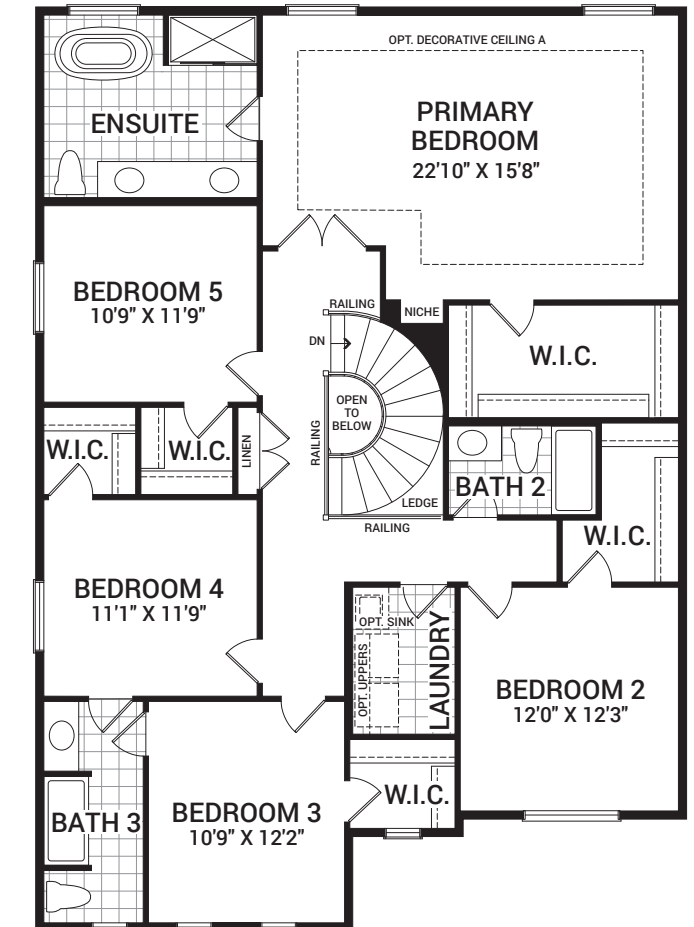


Floorplan – Elevation A

MAIN FLOOR

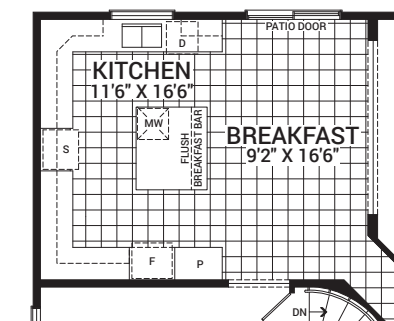


SECOND FLOOR

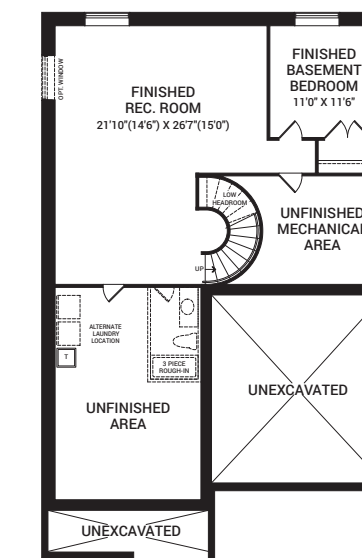


Flex Plans

OPTIONAL KITCHEN LAYOUT B



OPTIONAL FINISHED BASEMENT
REC. ROOM W/BEDROOM



Flex plans are alternate layouts unique to each model, offered as part of our predetermined menu of additional investments. To learn what other options are available for your model or more information, ask your Sales Representative. All plans, dimensions, and specifications are subject to change without notice. Actual usable floor space may vary from the stated floor area. Column locations, window locations, and sizes may vary and are subject to change without notice. Renderings are artist's concept only. E.&O.E. August, 2022

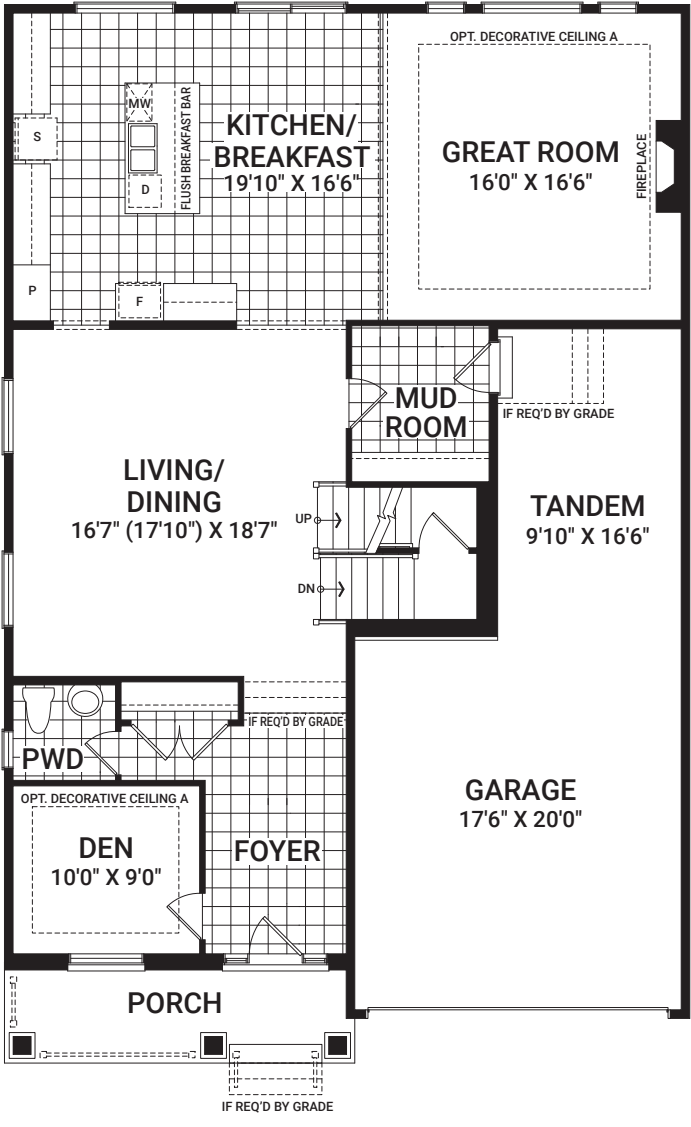
45' Rosewood

3,256 sq. ft.

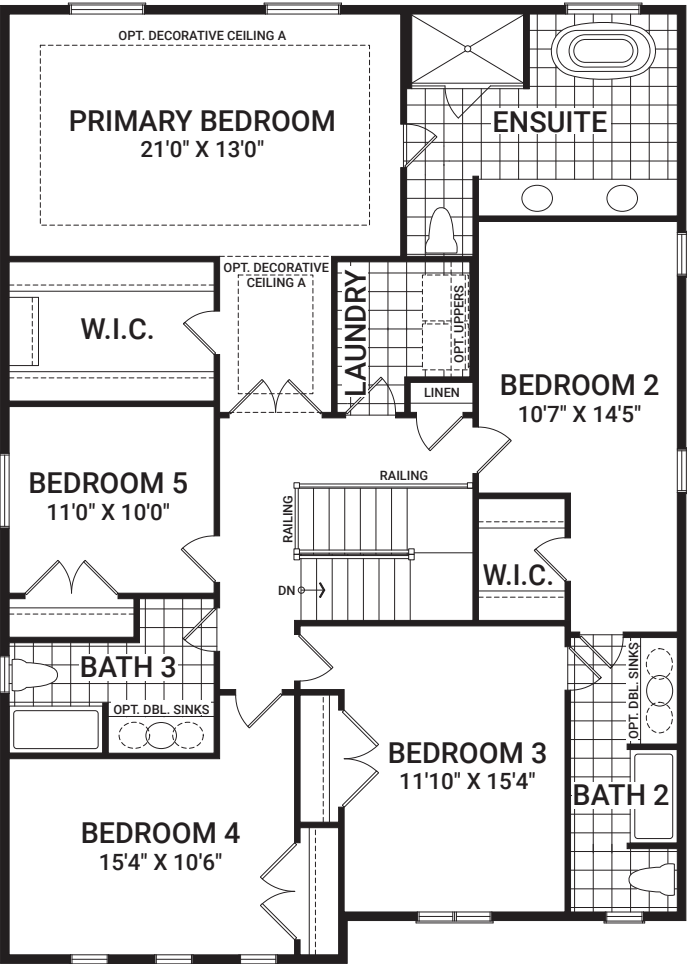


Floorplan – Elevation A

MAIN FLOOR

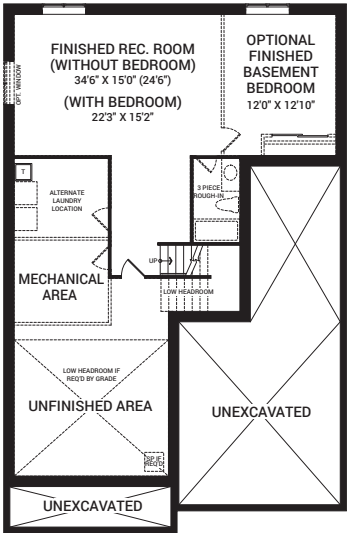


SECOND FLOOR



Flex Plans

OPTIONAL FINISHED BASEMENT
REC. ROOM W/OPTIONAL BEDROOM



Flex plans are alternate layouts unique to each model, offered as part of our predetermined menu of additional investments. To learn what other options are available for your model or more information, ask your Sales Representative. All plans, dimensions, and specifications are subject to change without notice. Actual usable floor space may vary from the stated floor area. Column locations, window locations, and sizes may vary and are subject to change without notice. Renderings are artist's concept only. E.&O.E. August, 2022

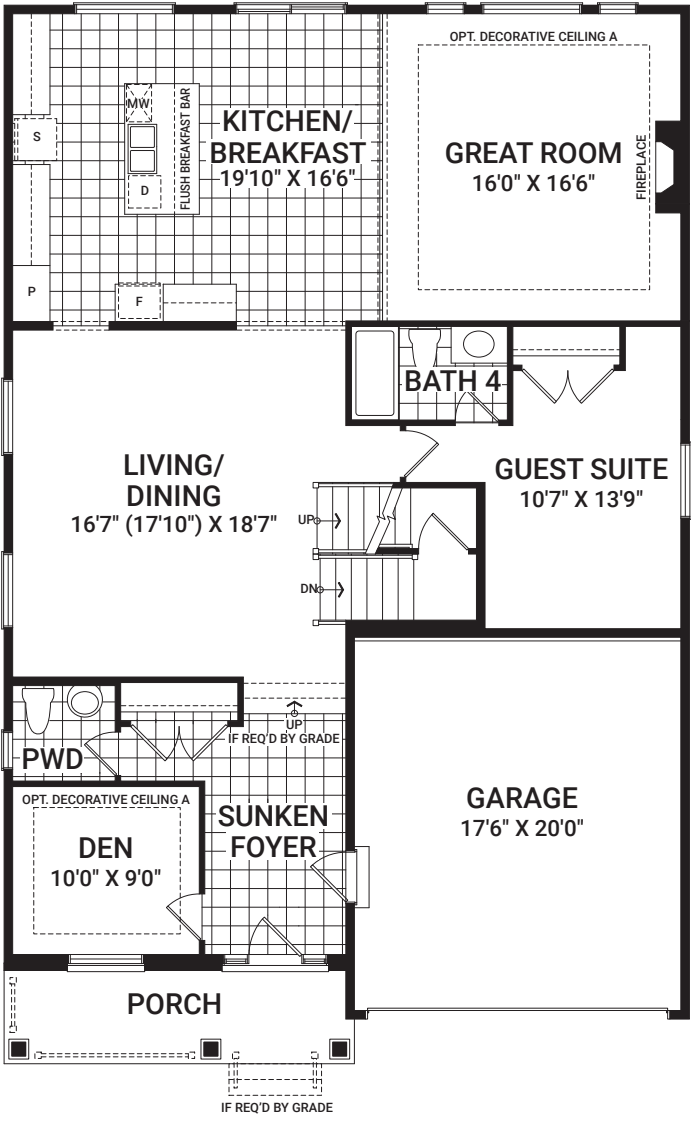
45' Rosewood with Guest Suite

3,425 sq. ft.

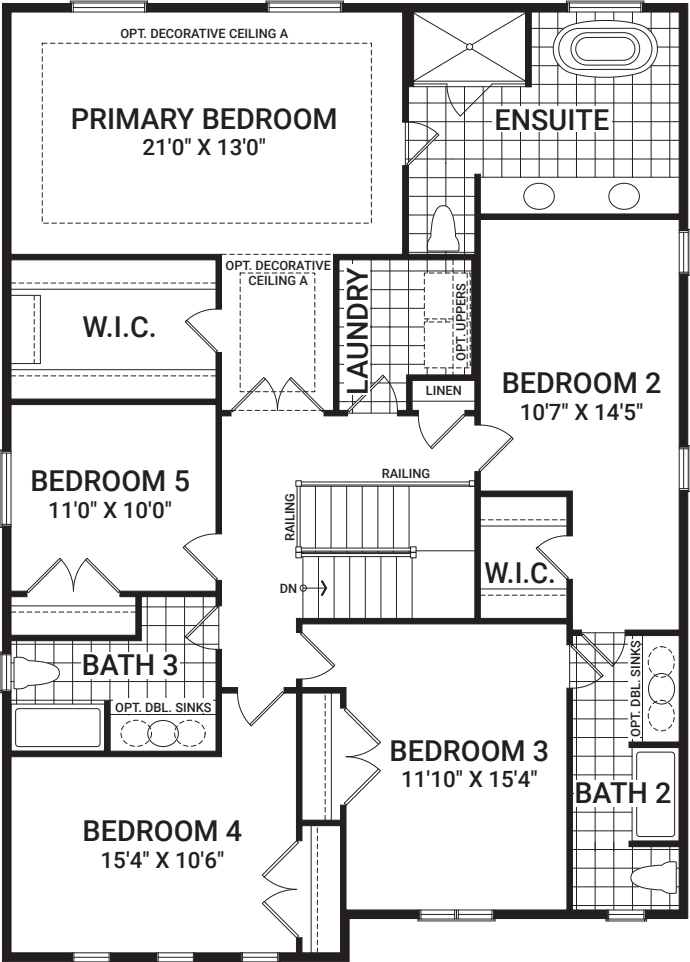


Floorplan – Elevation A

MAIN FLOOR

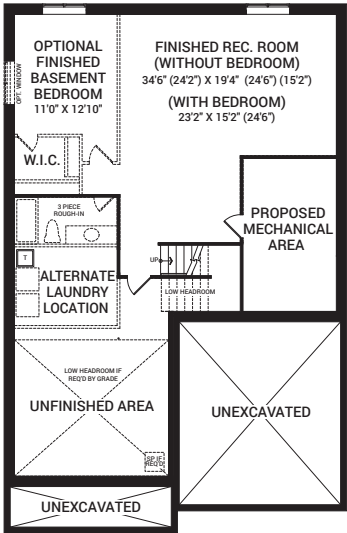


SECOND FLOOR



Flex Plans

OPTIONAL FINISHED BASEMENT
REC. ROOM W/OPTIONAL BEDROOM



Flex plans are alternate layouts unique to each model, offered as part of our predetermined menu of additional investments. To learn what other options are available for your model or more information, ask your Sales Representative. All plans, dimensions, and specifications are subject to change without notice. Actual usable floor space may vary from the stated floor area. Column locations, window locations, and sizes may vary and are subject to change without notice. Renderings are artist's concept only. E.&O.E. August, 2022



Homes and communities designed for a life well lived

Purchasing a home is one of the most important decisions you'll ever make. We're happy to offer each of our homeowners over 65 years of dedicated and committed building experience so you can make that decision with confidence.

At Minto Communities Ottawa, we're building better places to live, work, and play — one home and one relationship at a time. We have an ongoing investment in the health of this city's residents and the

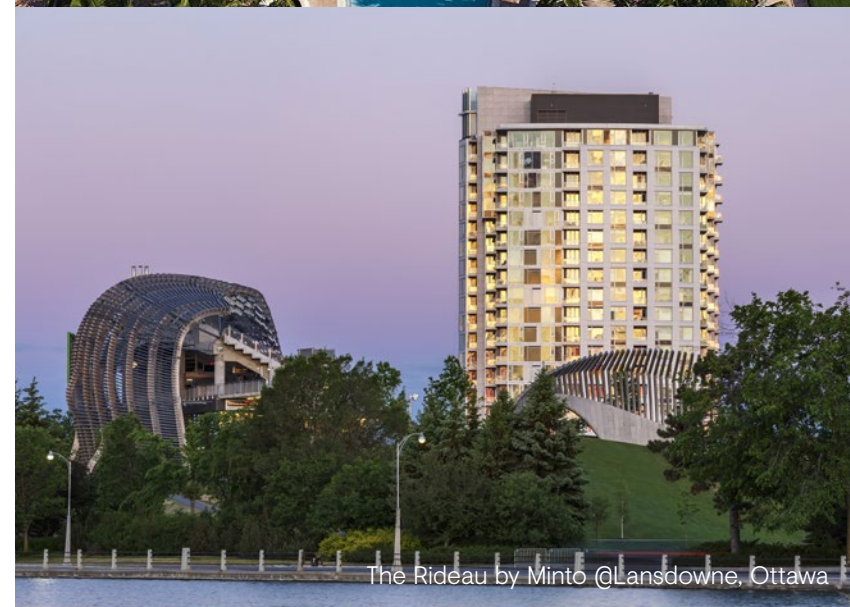
communities they call home. It's all about the special moments for us. We've built homes across Ottawa for generations, but what we're most proud of is the connections we've made with our homeowners and sharing the excitement of handing over a new set of keys.

We are part of Minto Group, a home builder, developer, property and investment manager for over 65 years that began here in Ottawa and has since grown to Toronto and the GTA, London, Calgary, Edmonton, and Florida, USA.

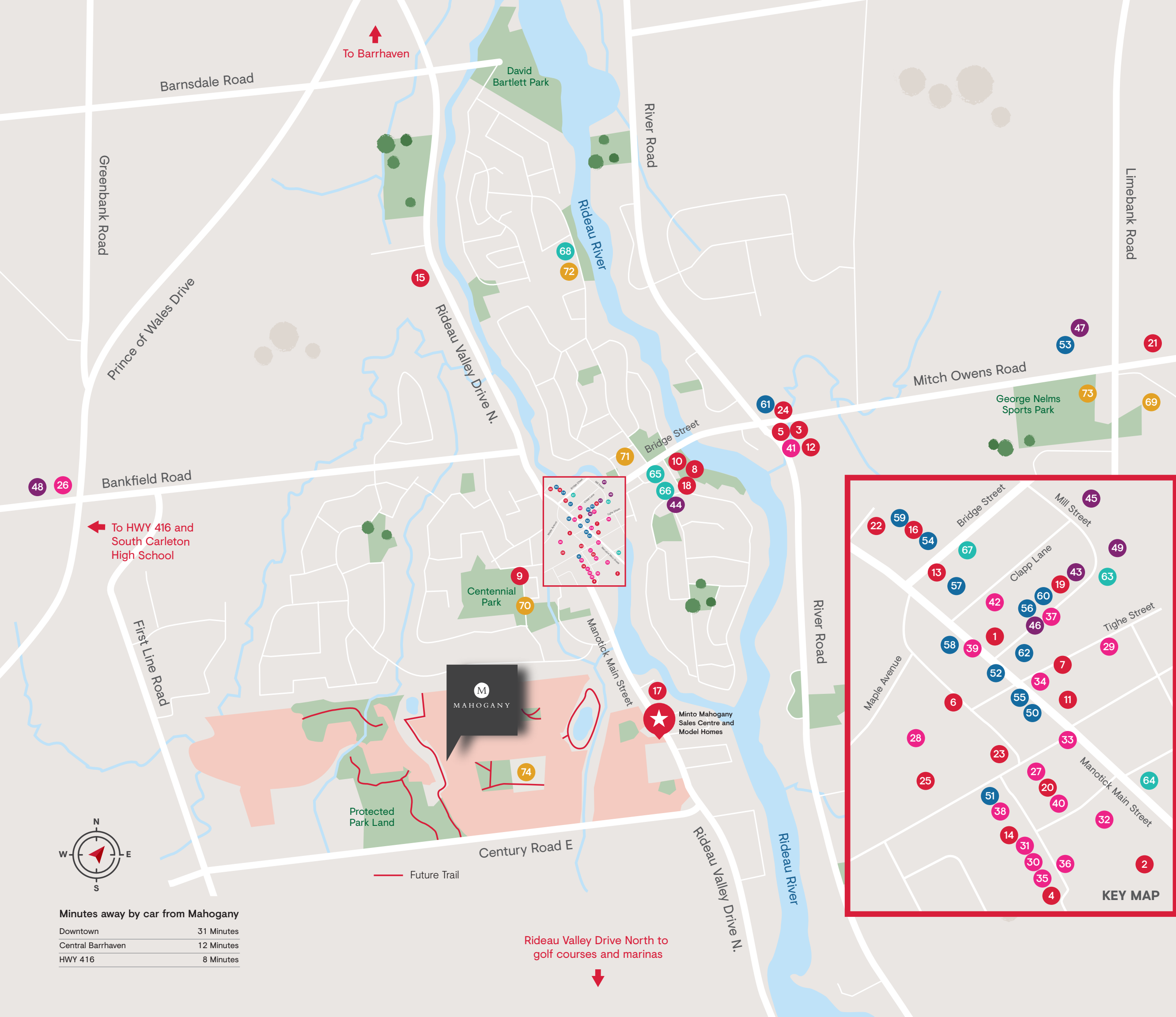
CALGARY | EDMONTON | FLORIDA | TORONTO & GTA | LONDON | OTTAWA

Our homes are designed and built for the way you live, where life's necessities are close at hand — often just a walk away.

Proud supporters of the Children's Hospital of Eastern Ontario (CHEO)







Minutes away by car from Mahogany

Downtown	31 Minutes
Central Barrhaven	12 Minutes
HWY 416	8 Minutes

Legend

★ Mahogany Sales Centre & Model Homes

SERVICES

1. Allure Hair Design and Medi-Spa
 2. Anytime Fitness
 3. Canada Post
 4. CIBC
 5. Drummond's Gas
 6. The Fitness Lab
 7. Hearing Life
 8. Long Island Aquatic Club
 9. Manotick Arena & Community Centre
 10. Manotick Boat Launch
 11. Manotick Garage – Tom's
 12. Manotick Medical Centre
 13. Manotick's Optometric Centre
 14. Manotick Physioworks
 15. Manotick Veterinary Hospital
 16. Manulife Bank
 17. Ottawa Fire Station 94
 18. Ottawa Library – Manotick
 19. Peppermint Organic Spa
 20. Quality Cleaners
 21. Rinaldo's Hair Designers & Spa
 22. Royal Bank of Canada (RBC)
 23. Royal Canadian Legion Branch 314
 24. TD Canada Trust
 25. Village of Manotick Animal Hospital
- And more...

SHOPPING

26. Abby Hill Farms
 27. The Beer Store
 28. Giant Tiger
 29. Gingerbread Man
 30. Great Canadian Dollar Store
 31. Home Hardware
 32. LCBO
 33. Lasting Impressions Gifts
 34. Manotick Office Pro
 35. Mansfield Shoes
 36. McDonough's Your Independent Grocer
 37. Mill Street Florist
 38. Pet Valu
 39. Rebel Petal Flowers
 40. Rexall
 41. Shopper's Drug Mart
 42. Terra Plants & Flowers
- And more...

ENTERTAINMENT

43. Dickinson House Museum
 44. Manotick Curling Centre
 45. Manotick Remembrance Park
 46. Mill Street Park
 47. On the Green Driving Range & Mini Golf
 48. Ottawa Manotick Polo Club
 49. Watson's Mill
- And more...

DINING

50. 692 Coffee & Bar
 51. Babbos Cucina Italiana
 52. Black Dog Bistro
 53. Burgers & Shakes
 54. CreekSide Bar & Grill Manotick
 55. The Mill Tavern
 56. Millers Oven
 57. Morning Owl
 58. Pizza All'Antica
 59. Subway
 60. Take Another Bite
 61. Tim Hortons
 62. The VAULT Bistro
- And more...

RELIGIOUS

63. Knox Presbyterian Church
64. Manotick United Church
65. Manotick Community Church
66. Ottawa Agape Chinese Alliance Church
67. St. James Anglican Church
68. St. Leonard Roman Catholic Parish

SCHOOLS

69. Manotick Montessori School
70. Manotick Nursery School
71. Manotick Public School
72. St. Leonard's Elementary Catholic School
73. St. Mark High School
74. Future Public School



Thank you for visiting.



